



# reveal

An enterprise clinical  
data search solution

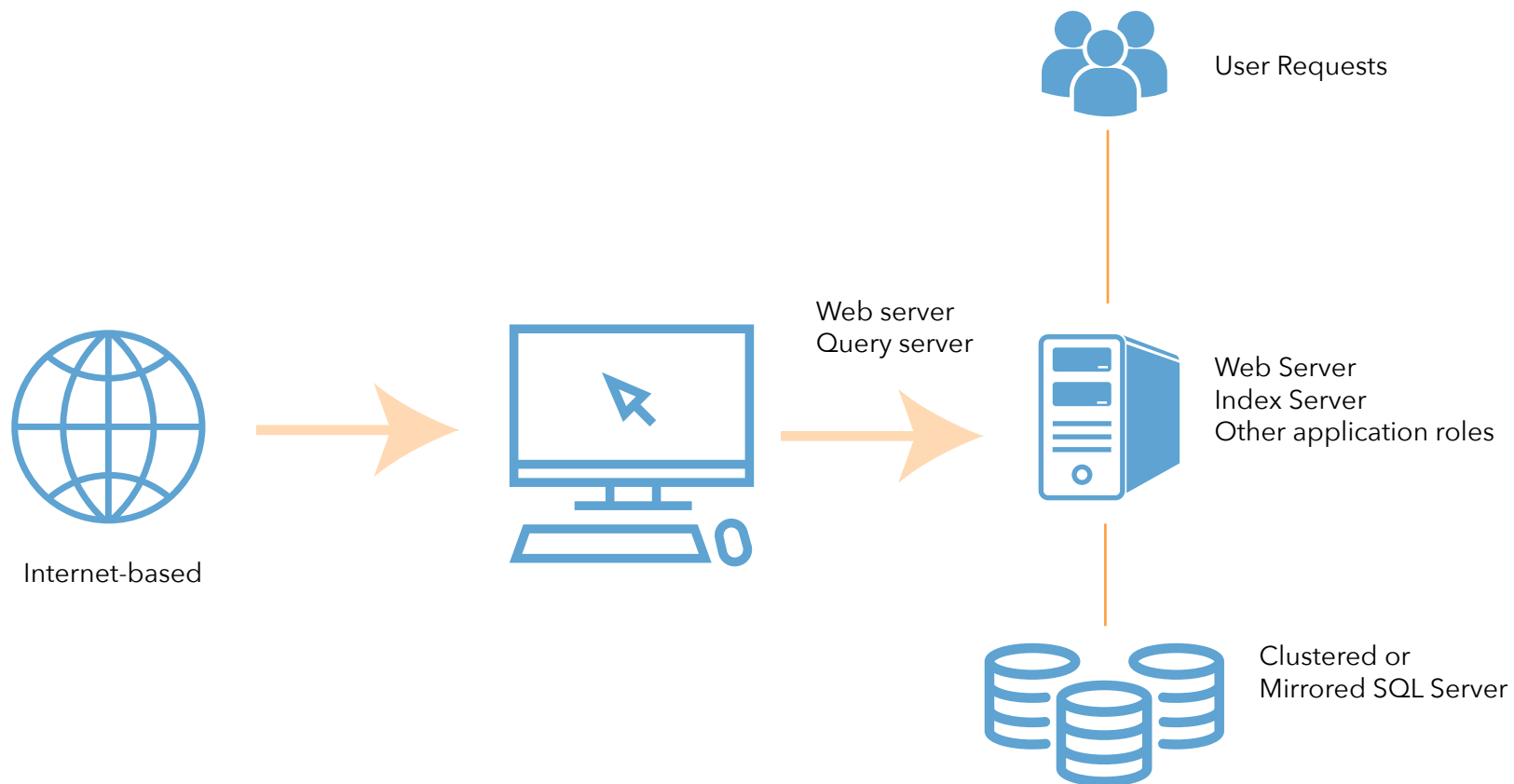
**d-wise**

[www.d-wise.com](http://www.d-wise.com)

# Rapidly retrieve clinical information across multiple data sources

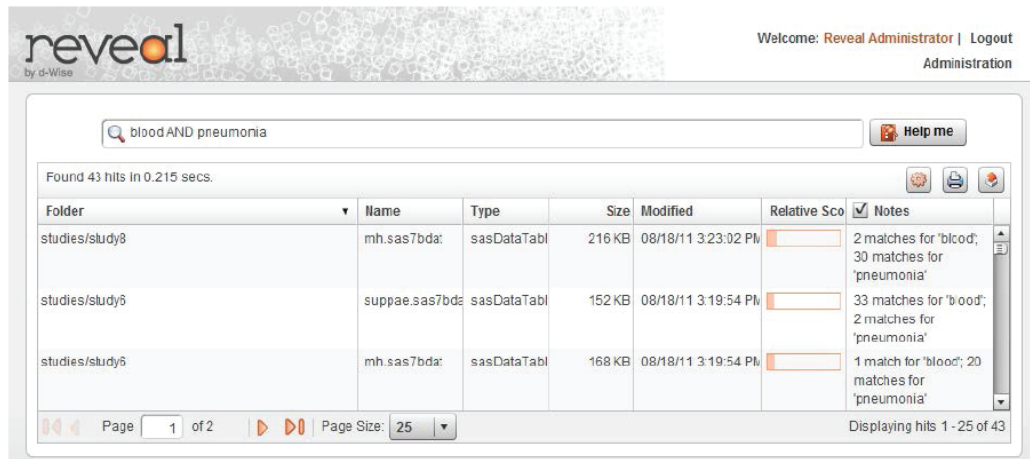
## True Enterprise Search

The vast and disparate nature of clinical data challenges our ability to search and analyze. Using Reveal, you can now answer specific questions about your data, spanning multiple sources, in seconds rather than hours. Questions such as: What hypertension events were seen across this compound? Reveal's search technology eliminates the need for multiple manual, time-intensive searches through various clinical data systems and uniquely reaches sources previously impossible to search. It bridges the gap between data and analytic tools so users avoid spending time hunting for the information and focus instead on the analysis to answer key scientific questions.



## Search Far and Wide

Reveal is designed to perform a federated search across different repositories. You can build a single search index which includes multiple, heterogeneous data sources. Even if your data resides in different physical locations, Reveal can consolidate the information into one searchable body of knowledge.



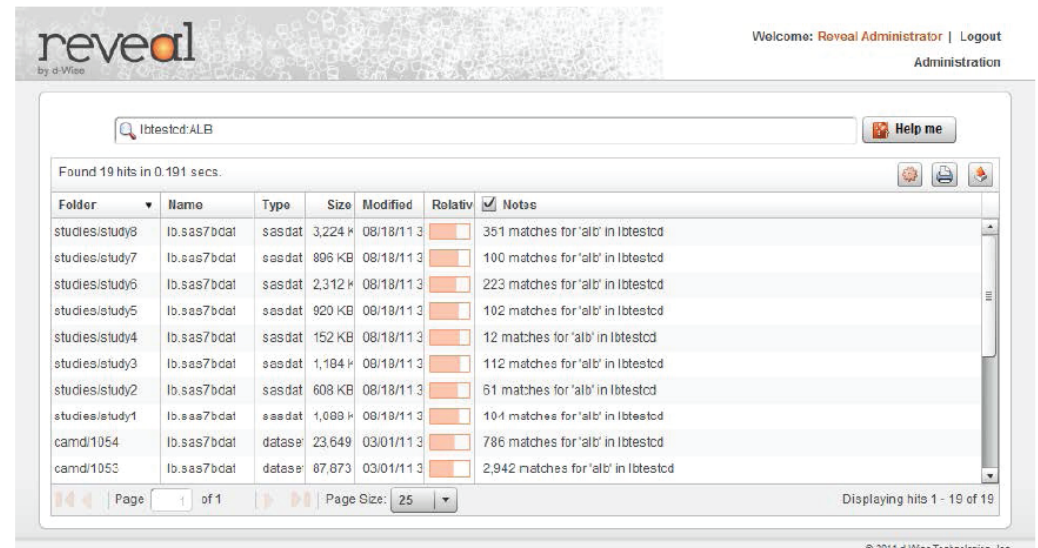
This picture shows the search results screen from Reveal after the user has entered the search: blood & pneumonia

## Narrow The Focus

Using metadata-powered search terms you can narrow your search to a study path. Using table and column names you can narrow your search to have precise clinical meaning. Reveal can search documents just like other enterprise search technology. However, Reveal is unique in that it recognizes data sets which are organized into rows and columns. The data set metadata is extracted by Reveal along with the rows of data. Both of these are indexed and available for searching. This powerful combination of searchable content enables you to find just what you are looking for.

## Easy Search

To use Reveal, you simply type in clinical terms to find your data. There is no need for complicated query languages like SQL. Reveal displays all of the files where both of the words blood and pneumonia occur. Search results appear in 1 or 2 seconds along with a relative ranking and file information.



Here we see an example of searching for laboratory results of tests for albumin using the query: lbtestcd:ALB

## Clinical Use Cases

- Search Data to Answer Specific Safety Questions (e.g. Queries from FDA, etc.)
- Search Data to identify location of certain Adverse Event data
- Search Documents to identify studies that had certain inclusion criteria
- Verify data and coding standards compliance
- Identify where non-standard data and variables are used
- Find empty data sets, empty folders, missing columns

## Administrative Use Cases

- Identify objects updated within a certain timeframe
- Confirm use of standard directory structure



## Actual situation encountered by a Reveal customer

### Challenge:

A large pharmaceutical company has a drug under review at the FDA. A spontaneous adverse event is reported and the company wants to know if similar events have occurred with other comparable approved drugs. The company has identified a dozen similar studies where they want to search for specific pathological terms, a task which is nearly impossible because the data is in different standards and formats.

### Solution:

With Reveal, the company can easily search for the specific terms and identify the files containing the clinical information they need. Within minutes they have access to the necessary data and can use their analytical tools to research the potential issue.

# Conclusion

---

Data is growing rapidly in both size and complexity presenting a daily challenge for pharmaceutical companies. Innovative tools are necessary in order to locate the data you need for the task at hand. Reveal is a fast, scalable search solution that can help you with these challenges. Reveal searches terabytes of data in just a few seconds, reducing the time it takes to answer your organization's complex data questions.

## Sandbox Options

- Client can search the Reveal sample data on a d-Wise hosted Reveal environment
- Client data can be uploaded to the d-Wise environment and users can search their data via a d-Wise hosted Reveal environment
- d-Wise can install a Reveal instance at the client site on their hardware and allow access and search of client data

## Pricing Models

- Reveal can be installed, hosted, or delivered in a SaaS delivery model.
- For SaaS delivery: Installation Fee and Hosting charges are determined by the amount of data being searched and the number of data sources
- For Installed or d-Wise hosted delivery: License Fees are also determined by the amount of data and the number of data sources with additional Maintenance, Support and Hardware charges